

The Tower at Speer

Apartment Homes

1255 Galapago Street

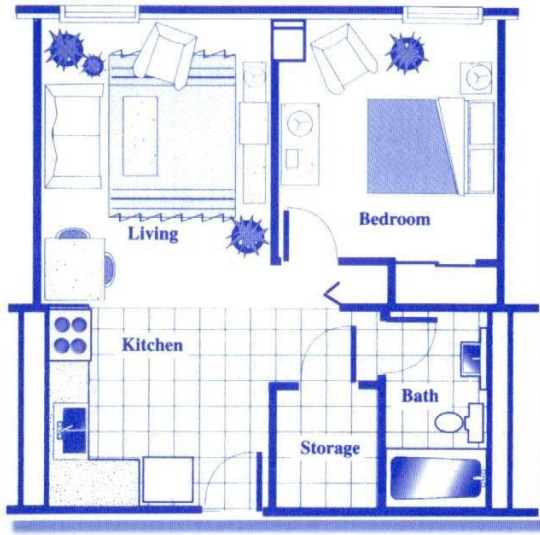
Located on the banks of Cherry Creek, adjacent to Denver's central business district, The Tower's premiere location provides exciting city advantages.

The Tower at 1255 Galapago Street is comprised of 172 one bedroom subsidized apartments, 18 of which have been ADA modified.

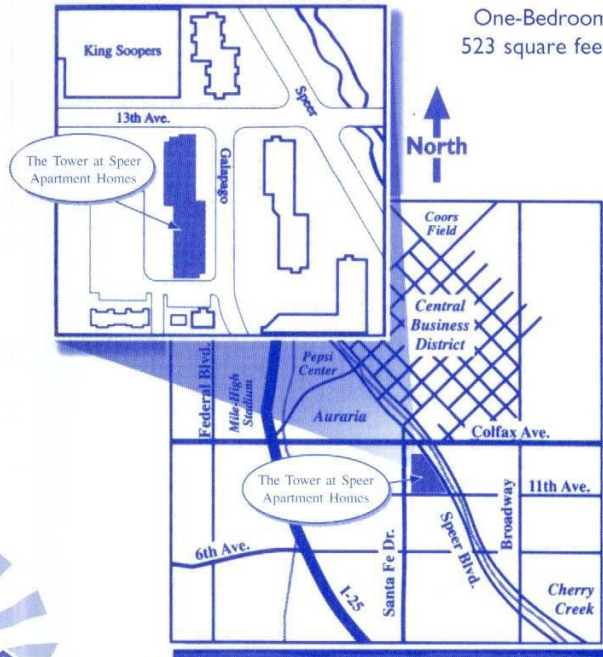
Each apartment features a variety of conveniences and a functional floorplan that allows for maximum living space. There is wall-to-wall carpeting in the living room and bedroom areas and modern appliances in the kitchen. Additional features include air conditioning, mini-blinds, ample closet space and convenient laundry facilities. A full service King Soopers grocery store is located just one block away.

At The Tower, full-time management and maintenance professionals are dedicated to making your downtown lifestyle an enjoyable experience!

- Close to transportation, shopping & services
- Community / Hobby rooms
- Storage in each apartment
- Emergency alert system
- Laundry facilities
- Off-street resident parking
- Controlled access entry
- Electric kitchens
- Digital TV and High-Speed Internet available



One-Bedroom
523 square feet



Section 8 Subsidized Housing
Minimum Age 62 or
Disabled / Handicapped
ADA Modified



303-592-7272

The Tower at Speer Apartment Homes



1255 Galapago Street
Denver, CO 80204